

* Clinical Trials Committee

Update

Chair: Crisy Roland
Co-Chair: Fahima Dossa
Co-Chair: Ally Istl
Co-Chair: Dario Callegaro



Update on STRASS 3 – Dario Callegaro, Fahima Dossa

Recall from our last meeting:

Survey of TARPSWG members to identify priorities for STRASS 3



The next trial should be histology-specific

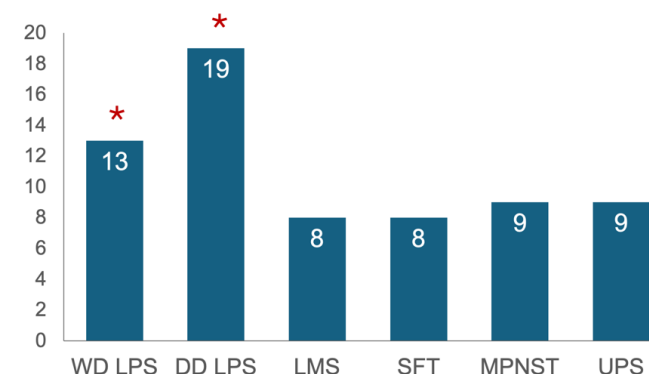


Histology with the most unmet need: DDLPS

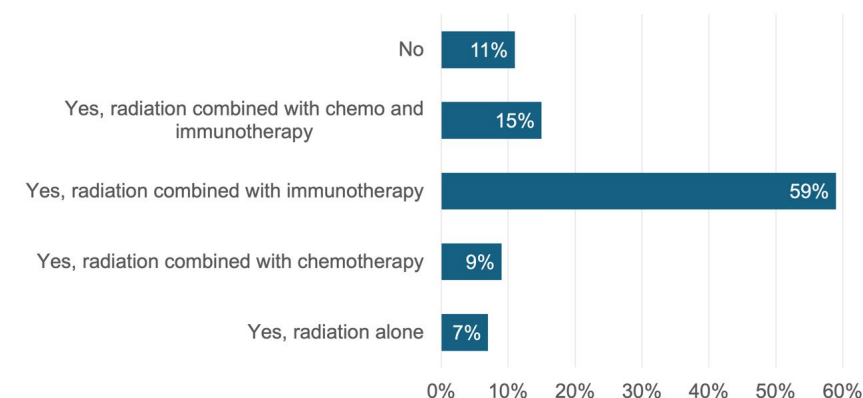


Agreement on role for combo RT + IO trial

Q1. What RPS histology has the most unmet need for study after STRASS and STRASS-2?



Q5. Is there a role for another trial of neoadjuvant radiation?

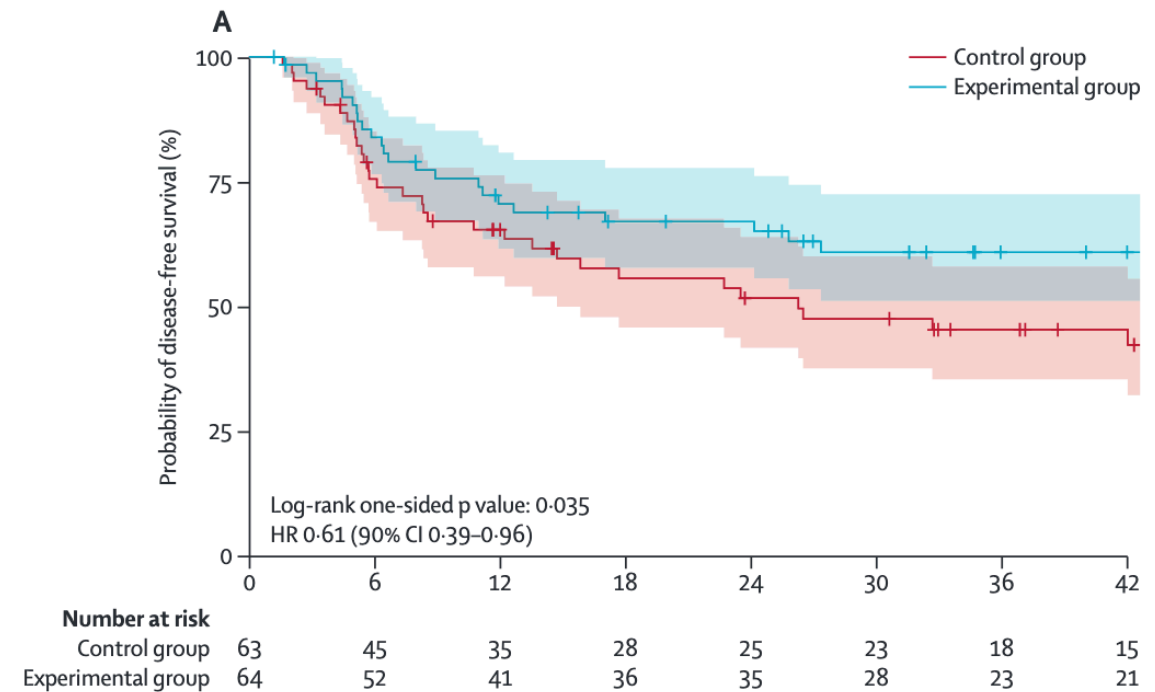




Building off SARC032

Neoadjuvant pembro + RT → Surgery → Adjuvant pembro
For high-grade extremity UPS & DDLPS

Improvement in **disease-free survival** with RT + IO

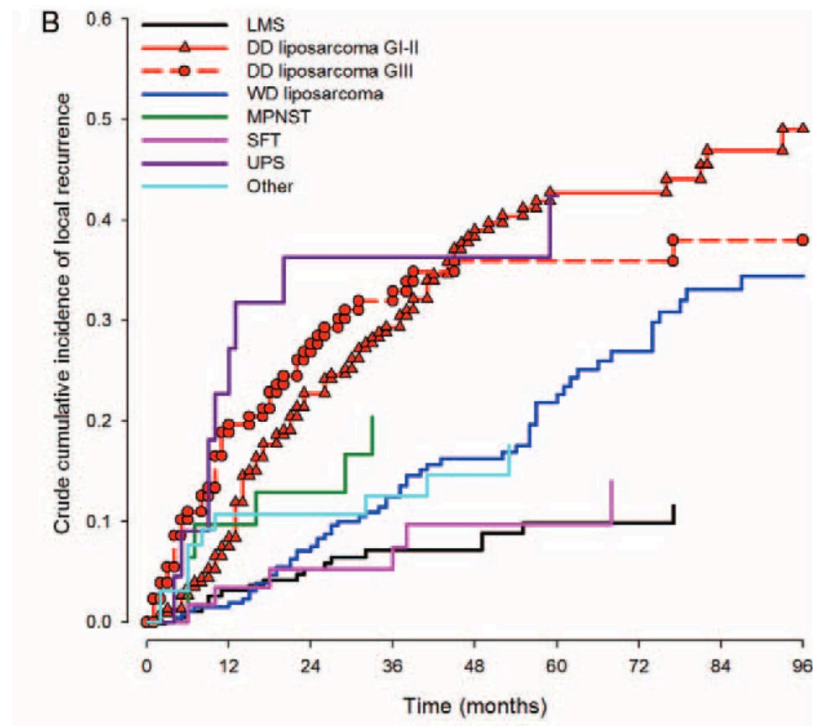


* Post-Meeting Feedback

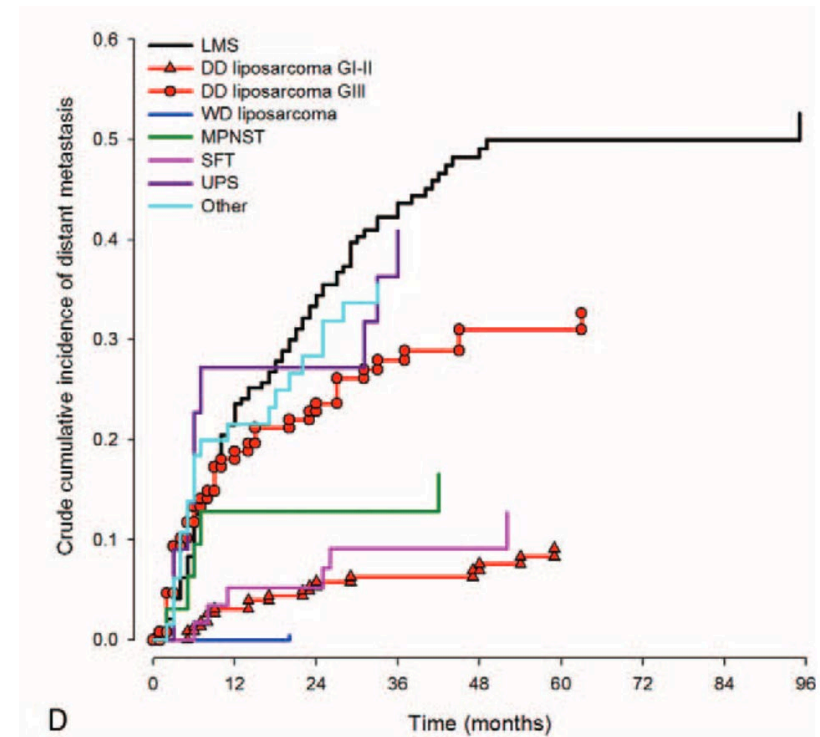
Clinical Trials Committee:

- RT + IO in liposarcoma
- Focus on G1-G2 DDLPS – the largest proportion of patients we see

* G1-G2 DDLPS



Local Recurrence



Distant Recurrence

Proposal:

Evaluate the efficacy of combination neoadjuvant RT + IO for retroperitoneal G1-G2 DDLPS

* Primary outcome: Event-Free Survival

- Local recurrence
- Distant recurrence
- Preoperative disease progression that precludes surgery
- R2 resection
- Death

Trial Arms

Intervention arm:



Concurrent RT + IO (x
3 cycles)

Surgery

F/U

Control arm:

- Preoperative RT → Surgery?
- Surgery alone?

Survey of STRASS-2 PIs (n=17)

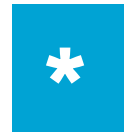
Use of preoperative RT in WDLPS and G1-G2 DDLPS



Variability in use of preoperative RT
WDLPS: 3/17
DDLPS: 6/17



Of the 3 highest enrolling STRASS sites (45% of patients):
WDLPS: 2/3
DDLPS: 2/3



Would you enrol patients with WDLPS and G1 -G2 DDLPS into a trial where the control arm was Preoperative RT followed by surgery?
Yes = 9/17
No = 8/17



Of the 3 highest enrolling STRASS sites (45% of patients):
Yes = 2/3
No = 1/3



Would you enrol patients with WDLPS and G1 -G2 DDLPS into a trial where the control arm was surgery alone?
Yes = 14/17
No = 3/17



Of the 3 highest enrolling STRASS sites (45% of patients):
Yes = 1/3
No = 2/3



Discussion



SIC Status/Immune Class - John Mullinax